

IDAHO STATE UNIVERSITY

GEOTECHNOLOGY

POCATELLO • BOISE • IDAHO FALLS

GIS-RELATED PROGRAMS:

- Undergraduate minor in geotechnologies
- Post-baccalaureate certificate in geotechnologies
- Master of Science in Geographic Information Science
- Ph.D. in engineering and applied science (EAS) with a geospatial emphasis, and a Ph.D. in geosciences

SPECIALTY AREAS:

- Spatial analysis & geostatistics
- Remote sensing
- Web and mobile services
- High-performance computing/CyberGIS

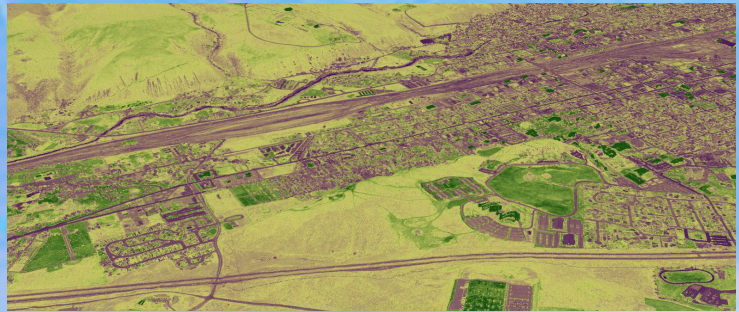
RESEARCH CENTERS

- ISU GIS Training and Research Center – Specializing in rangeland research, the GIS TReC also offers workshops to serve the continuing education needs of Idaho's growing GIS community.
- Boise Center Aerospace Laboratory – BCAL focuses on remote sensing related research for environmental science.

DEPARTMENT OF GEOSCIENCES

921 S. 8th Ave, Mail Stop 8060
Pocatello, Idaho 83209-8060
(208) 282-3235 • geology@isu.edu

Dr. Carrie Bottenberg, Program Coordinator
(208) 282-3538 • bottcarr@isu.edu



Idaho State University's geotechnologies academic programs engage students in a vibrant and growing field of study that extends beyond the classroom to the computer lab and into the field. Over the past few decades, Geographic Information Systems (GIS), remote sensing, Global Positioning Systems, computational geography, and spatial visualization have become fundamental tools for facilitating work in multiple disciplines, like geology, biology, anthropology and history. Today Geotechnology is recognized as its own discipline, Geographic Information Science.

ISU's comprehensive programs address the significant demand for trained experts in Geographic Information Science through academic programs in the Department of Geosciences within the College of Science and Engineering. Related programs are also offered through the Department of History in the College of Arts and Letters, and the Department of Geomatics in the College of Technology.

Our student research focuses on natural resource applications of GIS (including remote sensing and the global navigation satellite system) as well as the development of software applications for GIS.



Idaho State
UNIVERSITY
Department of Geosciences

On the Web at
gisci.isu.edu