

Data Science and Data Engineering


Keith T. Weber, GISP
ISU GIS Director
GIS Training and Research Center



Pocatello | Idaho Falls | Meridian | Twin Falls


Data Science


- A growing field
 - Interdisciplinary
 - Seeks to extract information from data
 - Born from Big Data/unstructured data
 - NOTE: 80% of data is considered unstructured data
- Spatial Data Science
 - A more specialized sub-field of data science



Pocatello | Idaho Falls | Meridian | Twin Falls

Structured vs. Unstructured Data

Structured Data	VS	Unstructured Data
<p>Can be displayed in rows, spreadsheet, relational database</p> <p>Highly-organized data that is easy to analyze</p> <p>Examples: customer's phone numbers, names, zip codes</p>		<p>Cannot be displayed in rows, spreadsheet, relational database</p> <p>Not-organized data that is hard to collect and analyze</p> <p>Examples: emails, video files, images, data from social media as Facebook, LinkedIn</p>



Pocatello | Idaho Falls | Meridian | Twin Falls

Structured vs. Unstructured Data (cont'd)

- This semester, we have focused on structured data
- How can we work with unstructured data, especially in GIS
 - This is a task for Data Engineering tools and techniques

Pocatello | Idaho Falls | Meridian | Twin Falls



First, Take out the Trash

- Some data is really is trash!
 - How to identify trash
- ROT
 - Redundant
 - Obsolete
 - Trivial



Pocatello | Idaho Falls | Meridian | Twin Falls



Second, Use these **Keys** to Unlocking Unstructured Data

- Understand, it is not as *unstructured* as you may think
 - A social media feed is not just a collection of words
- The digital file behind the scenes contains much more
 - Metadata (author and date)
 - Message Content (text, recipient, hyperlink, image, hashtag)
 - Interactions (reposts, favorites, replies)

The first day of the new semester is upon us. Welcome back everyone. We are back to our normal hours M-F 8a-5p. If you need any assistance feel free to stop by, call (ext. 4444), or email us. @IdahoStateU | IdahoStateUCoSE

Pocatello | Idaho Falls | Meridian | Twin Falls



Posts are Machine-Readable

- Using **Esri's GeoEvent** server, a server can read X posts *and* filter them
 - **Filtering** is the second key to unlocking unstructured data
 - In other words, identify data of interest (e.g., Posts with a hashtag #GISDay)
 - When written to a database, these data become structured

Pocatello | Idaho Falls | Meridian | Twin Falls



Structured Spatial Data from Email

- There are approximately 300 billion emails sent each day
- Each email (without attachments) is approximately 500 bytes in size
 - 150 trillion bytes
 - 146 billion KB
 - 136 TB
- In one year, harvesting and storing all emails would require:
 - 0.05 EB (1/10th of an Exabyte)

Pocatello | Idaho Falls | Meridian | Twin Falls



All Emails can be stored for a very long time

- For example, it is estimated NSA data centers can store 1 (or more) Yottabytes of data
 - Thus, a 12 EB data center can store all emails for 250 years, OR
 - Store all emails for 25 years AND
 - All social media posts for 25 years, etc.

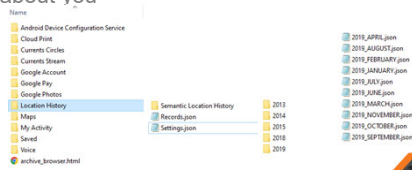
Measure	Acronym	Characters	Relationship
Byte	B	1	8 bits
Kilobyte	KB	1,024	1,024 B
Megabyte	MB	1,048,576	1,024 KB
Gigabyte	GB	1,073,741,824	1,024 MB
Terabyte	TB	1,099,511,627,776	1,024 GB
Petabyte	PB	1,125,899,906,842,620	1,024 TB
Exabyte	EB	1,152,921,504,606,850,000	1,024 PB
Zetabyte	ZB	1,180,591,620,717,410,000,000	1,024 EB
Yottabyte	YB	1,208,925,819,614,630,000,000,000	1,024 ZB

Pocatello | Idaho Falls | Meridian | Twin Falls



Spatial Data from Web Browsers and Smart Phones

- For Example, Google (Android smart phones and ISU's email/browser system) collects and stores a lot of data about you



Let's look at one of these JSON files

- Look for keywords or something that can be used to parse these data
- BRAINSTORM...

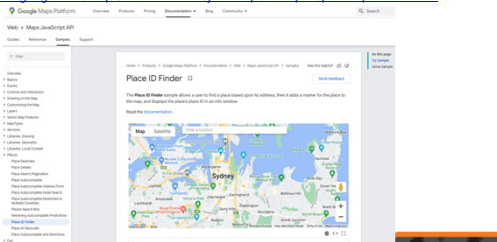
```

{
  "name": "Idaho State University",
  "location": {
    "lat": 43.6197,
    "lon": -116.2525
  },
  "types": [
    "University",
    "Point of Interest",
    "Educational Institution"
  ],
  "vicinity": "2100 S. 16th St., Idaho Falls, ID 83402",
  "website": "http://www.isu.edu",
  "phone": "(208) 338-2000",
  "email": "info@isu.edu",
  "opening_hours": {
    "open_now": true,
    "periods": [
      {
        "open": "09:00",
        "close": "17:00"
      }
    ]
  },
  "reviews": {
    "rating": 4.5,
    "text_snippet": "Great campus with beautiful views and excellent faculty."
  }
}

```

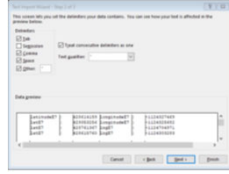
What is PlaceID?

- <https://developers.google.com/maps/documentation/javascript/examples/places-placeid-finder>

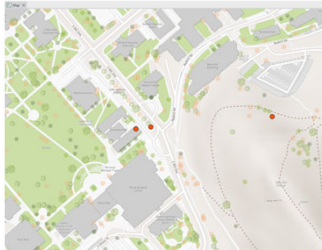


How Accurate are these Locations?

- latitudeE7: 428614159, longitudeE7: -1124327469
- In other words:
 - 42.8761416°
 - -112.4327469°
- Now its easy!
 - Any programmers out there?
 - MS Excel enthusiasts?
 - How about ArcGIS Pro?



Google Location Data in ArcGIS Pro



Location Precision

- Everyday, everyone's location can be tracked (well, your smartphone's location is tracked)
- Limitations:
 - I did not find data stored for a full 24 hrs.
 - BUT only when I had LOCATIONS turned on
- PS- These data are stored for a long time (I got my first Android smart phone in 2013)

Information from Imagery



This Photo by Unknown Author is licensed under CC BY



Pocatello | Idaho Falls | Meridian | Twin Falls

Remote Sensing and The IoT

- IoT is the Internet of Things
- Object/Feature Extraction with ArcGIS Pro
 - Detect Objects Using Deep Learning
- Map buildings
- Identify people
- Gait analysis



Pocatello | Idaho Falls | Meridian | Twin Falls

Facial Recognition

- In 2016, Facebook boasted its facial recognition had 98% accuracy

98 percent of the time



Facebook, according to the company, is able to accurately identify a person 98 percent of the time. Compare that with the FBI's facial recognition technology, Next Generation Identification, which according to the FBI, identifies the correct person in the list of the top 50 people only 85 percent of the time.

Facebook's Facial Recognition Software Is Different From The FBI.

www.npr.org/sections/alltechconsidered/2016/05/18/477819617/facebook-fa...



Pocatello | Idaho Falls | Meridian | Twin Falls

Advanced Data Engineering Heightens the Need for Professional Ethics

Advantages of harvesting data

- Brainstorm

Disadvantages of harvesting data

- Brainstorm

Pocatello | Idaho Falls | Meridian | Twin Falls





Key Concepts

- Gleaning information from unstructured data is an emphasis area in Data Science
- New, powerful tools leveraging artificial intelligence algorithms are emerging and maturing
- Knowing WHERE makes data much more valuable
- **Data** is considered an asset, **Information** is a valuable asset
- High spatial and temporally resolved data requires care to avoid **unethical use** of these tools/resulting data

Pocatello | Idaho Falls | Meridian | Twin Falls



Professional Hints and Tips

- Building a great resume
 - Promote your skillset
 - Introductory sentence
 - Don't misrepresent yourself
 - Aesthetics

Pocatello | Idaho Falls | Meridian | Twin Falls



Questions/Discussion?



Pocatello | Idaho Falls | Meridian | Twin Falls

Idaho State
UNIVERSITY
