

Geodetic Control Technical Working Group (GC-TWG)

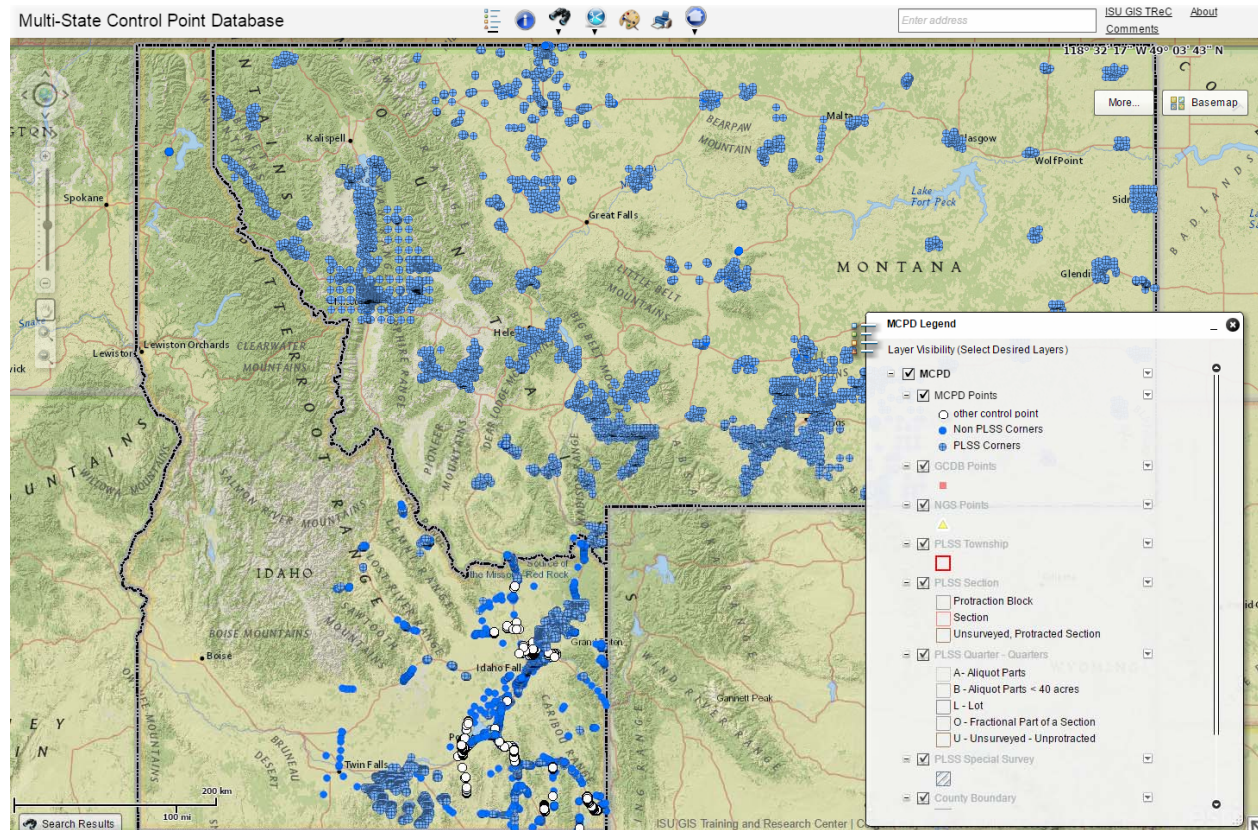
Chair: Keith T Weber, GISP

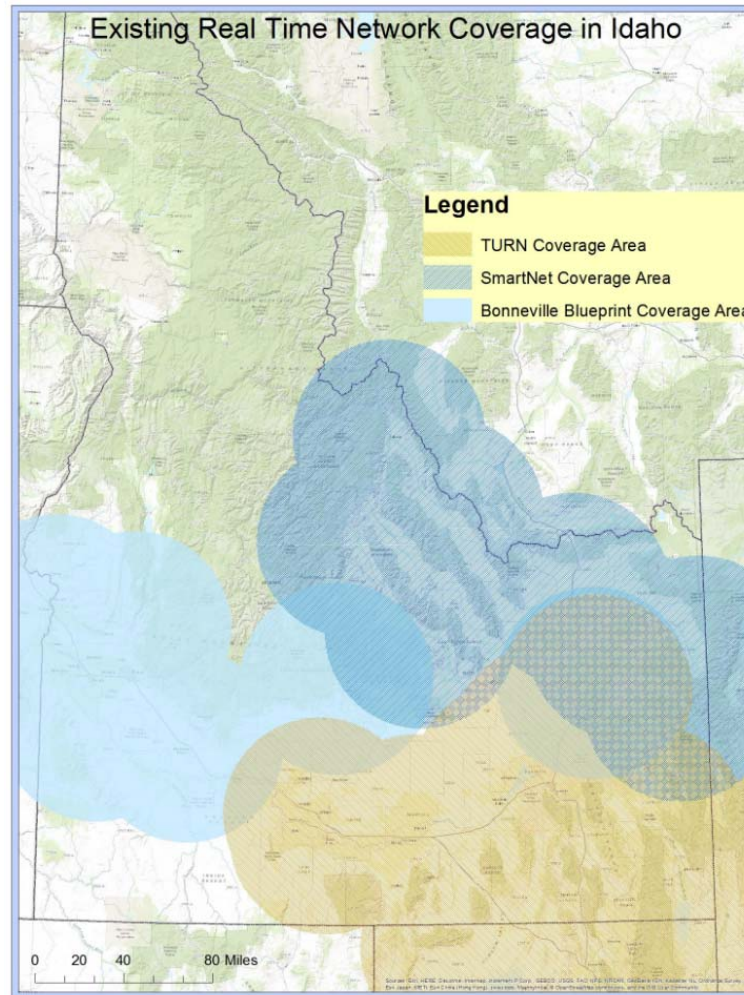
Meetings

- GC-TWG meetings bi-monthly
- Primary/focus topics include
 - Multi-state control point database (MCPD)
 - Real-time network differential correction (TURN and SmartNet)

MCPD

- 13,430 points total
 - Idaho = 8,511 points
 - Montana = 4,919 points





Pocatello | Idaho Falls | Meridian | Twin Falls

Idaho State
UNIVERSITY

Control Point Standard



STATE OF IDAHO

Control Point Standard For the Geodetic Control Framework Theme

Version 1.0
Effective September 15, 2016

Revision History

Established by ITA September 15, 2016
First Draft May 26, 2016

Contact

Idaho State University
208.282.2757
giscenter@isu.edu

Control Point Standard ver. 1.0

1 | Page

- https://gis.idaho.gov/pdf/Framework/GeodeticControl/ControlPoint%20Standard_APPROVED.pdf

Future

- Guideline and best practices document to understand control point life cycle

Questions?

