

Web Map Applications: The Geo-Web Revisited

IT4GIS
Keith T. Weber, GISP
GIS Director
ISU-GIS Training and Research Center

Pocatello | Idaho Falls | Meridian | Twin Falls

Idaho State
UNIVERSITY

Web Map Apps

- In the first part of our exercise, you visited some web map applications



Pocatello | Idaho Falls | Meridian | Twin Falls

Idaho State
UNIVERSITY

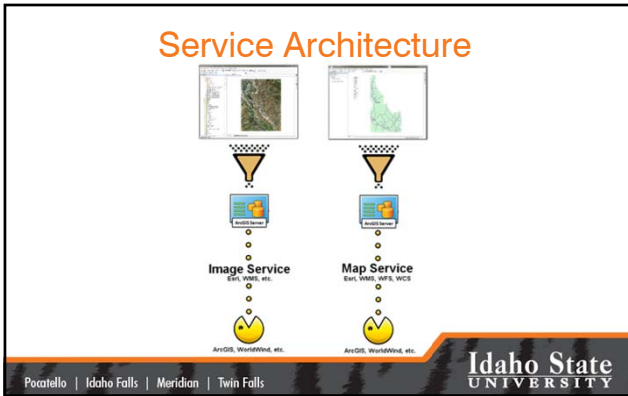
What's a Web Map App?

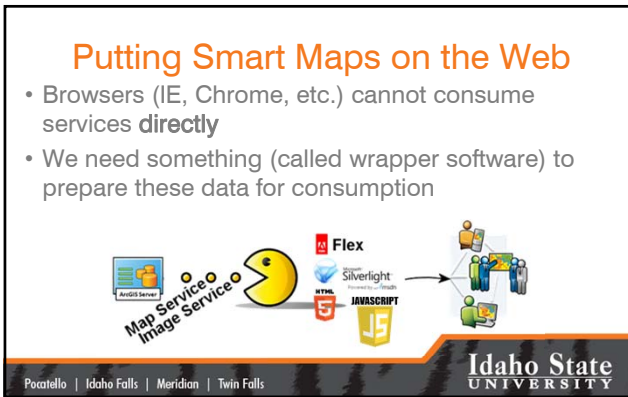
- Web Map Apps rely on a **browser** and wrapper software to deliver GIS content to the client
- It is the **browser** that "*consumes*" the service(s)
- Web Map Apps are frequently "mash-ups" of various map and image services

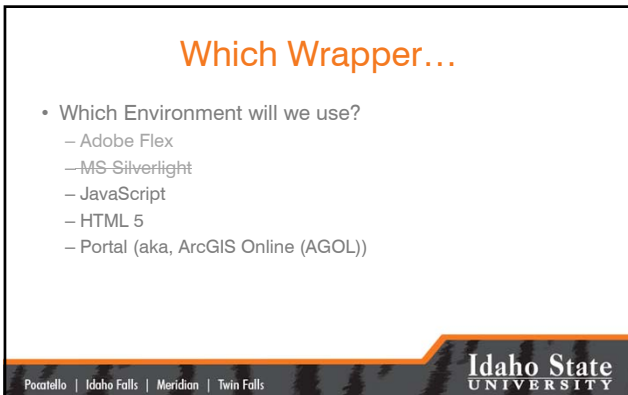
Wrapper software is a generic term referring here to software like ArcGIS Portal

Pocatello | Idaho Falls | Meridian | Twin Falls

Idaho State
UNIVERSITY







AGOL Architecture

- AGOL is a cloud resource
 - ISU's AGOL account is called **gISU**
 - Each of you already has (should have) a user account on gISU
 - gISU is allowed 3,000 user accounts
 - gISU is allowed 15,000 credits under our site license

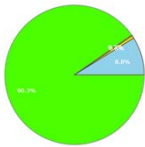
Pocatello | Idaho Falls | Meridian | Twin Falls



Credits: Things you Need to Know!

Show statistics for Custom range Start 7/1/2014 End 8/29/2014

gISU used 464 credits



Click on the slice for more detail

	Units	Credits
Storage		
Files	0 GB	0
Features	0.02 GB	439
Tiles	549.02 MB	1
Analytics - Usage		
Geocoding	0 locations	0
AddressMatch	0 requests	0
Geographic Events	0 events	0
Network Analysis	43 routes	41
Spatial Analysis	0 requests	0
Location Analysis	0 requests	0
Published Content - Usage		
Geographics	0 requests	0
Published Content - Storage		
Files	0 GB (bandwidth)	0
Features	0.09 GB (bandwidth)	0
Tile Generation	3,270 tiles	3
Total		464

Pocatello | Idaho Falls | Meridian | Twin Falls



Credits: Things you Need to Know!

- Storing geospatial data in the AGOL cloud costs credits
- Creating and storing TILES in the AGOL cloud costs LOTS of credits
- What do we do???

Pocatello | Idaho Falls | Meridian | Twin Falls



Leverage all our resources

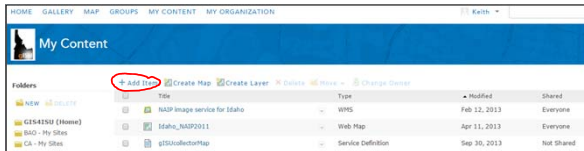
- Create and store OUR geospatial data on OUR server
 - The GIS Center's Portal
- Create web services (map/image services) on OUR server
- Share these services' end-points with AGOL

Pocatello | Idaho Falls | Meridian | Twin Falls



How?

- AGOL- My Content- Add Item

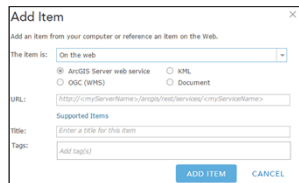


Pocatello | Idaho Falls | Meridian | Twin Falls



How to...

- The ITEM URL expects a REST or SOAP end-point



Pocatello | Idaho Falls | Meridian | Twin Falls



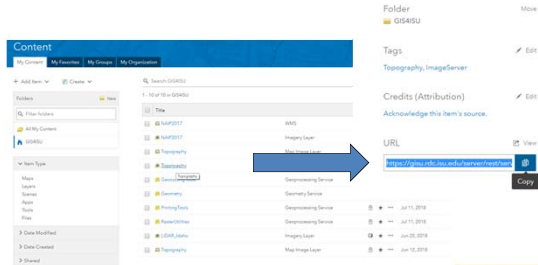
How do I find my end-point?

- Use ArcGIS Pro from your desktop
- Access Portal from a web browser (easier)
 - Log-in
 - View Content
 - Select the web layer of interest
 - Copy its REST end-point

Pocatello | Idaho Falls | Meridian | Twin Falls



How do I find my end-point?



Pocatello | Idaho Falls | Meridian | Twin Falls



Copy and Paste

- Copy the REST end-point
- Paste it into AGOL

Pocatello | Idaho Falls | Meridian | Twin Falls



Time to Share

- From AGOL, share your item!
 - Once you add an ITEM to AGOL you can easily share it **with others** (by named group) or with EVERYONE.
 - Recall our discussion of permissions from the "Systems Administration" section of this class

Pocatello | Idaho Falls | Meridian | Twin Falls

Idaho State
UNIVERSITY

Why not use *our* Portal Directly

- Permissions and firewalls
- Visibility and discoverability

Pocatello | Idaho Falls | Meridian | Twin Falls

Idaho State
UNIVERSITY

Now its time for Cartography

- Make your map using AGOL tools
 - Explore
 - Have fun!
 - Detailed instructions in this week's exercise document
- Since the data is not uploaded to AGOL, you will not use any credits!

Pocatello | Idaho Falls | Meridian | Twin Falls

Idaho State
UNIVERSITY

Questions?



Pocatello | Idaho Falls | Meridian | Twin Falls

Idaho State
UNIVERSITY
