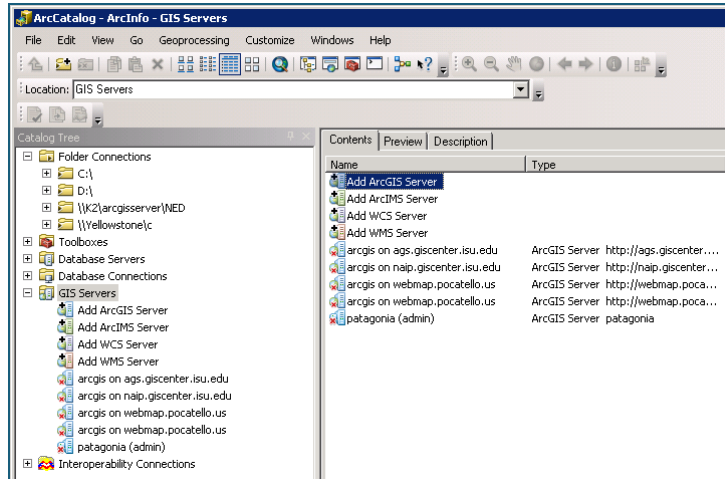


# Using RECOVER Web Services from ISU's GIS TReC

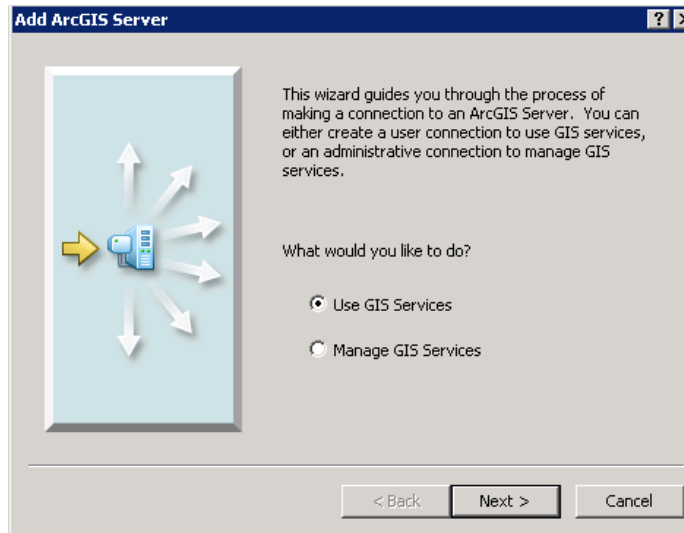
The GIS Center at Idaho State University offers many of its geospatial datasets as web services. To access these services you will need ArcGIS or similar software. The following provides instructions describing how to connect to the RECOVER server and a brief description of the geospatial data available.

## TUTORIAL: CONNECTING TO AND USING ARCGIS WEB SERVICES

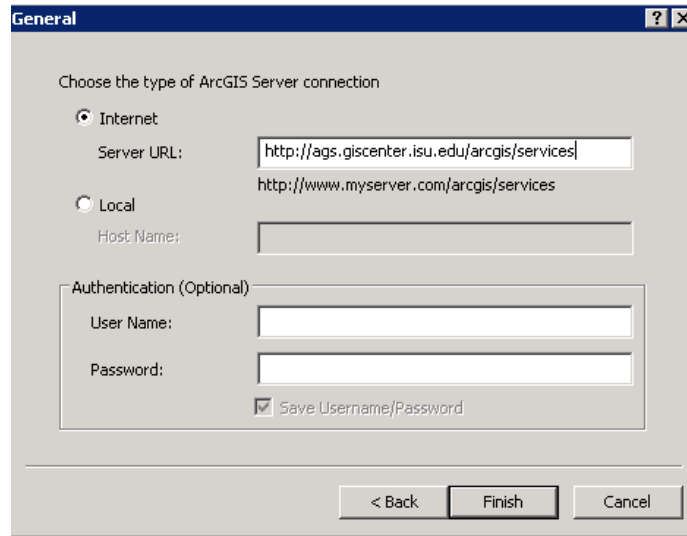
1. Launch ArcCatalog
2. Expand the GIS Servers section in the Table of Contents
3. Double-click *Add ArcGIS Server*



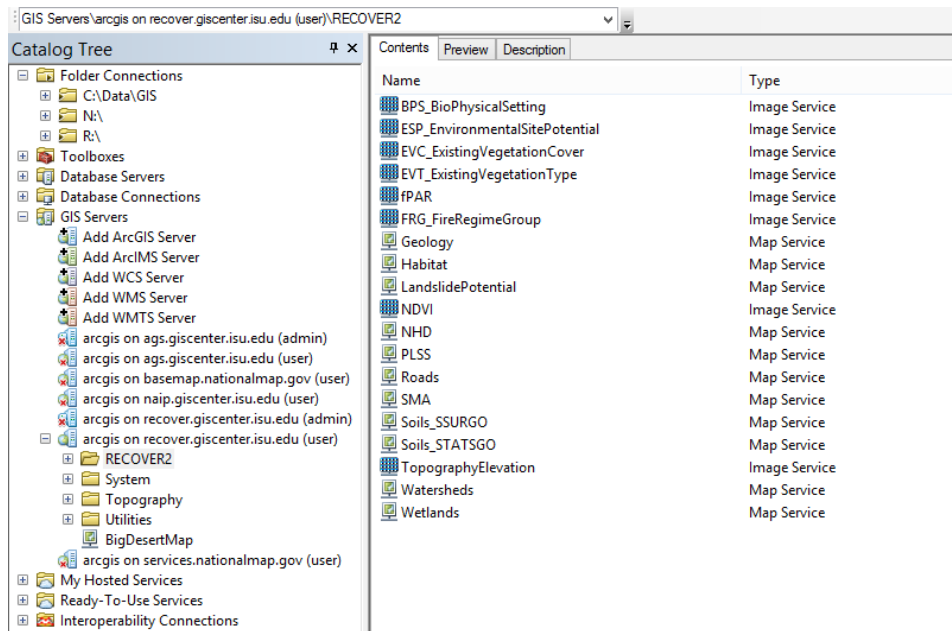
- a. In the Add ArcGIS Server wizard, select *Use GIS Services*



- b. Click Next
- c. In the next step, enter <http://RECOVER.giscenter.isu.edu/arcgis/services> to connect to the RECOVER Server (*note: you must make this connection from within ArcGIS. Pointing your web browser to this URL will cause an error on your computer*)
- d. Click Finish



4. A connection will be made for you and shown under the GIS Servers list
5. Double-click your new connection to connect
6. Expand this server connection.



7. You should now see all the image and map services available on this ArcGIS Server
8. You can navigate into this folder, preview, and use these data in the same way as GIS data stored on your local hard drive