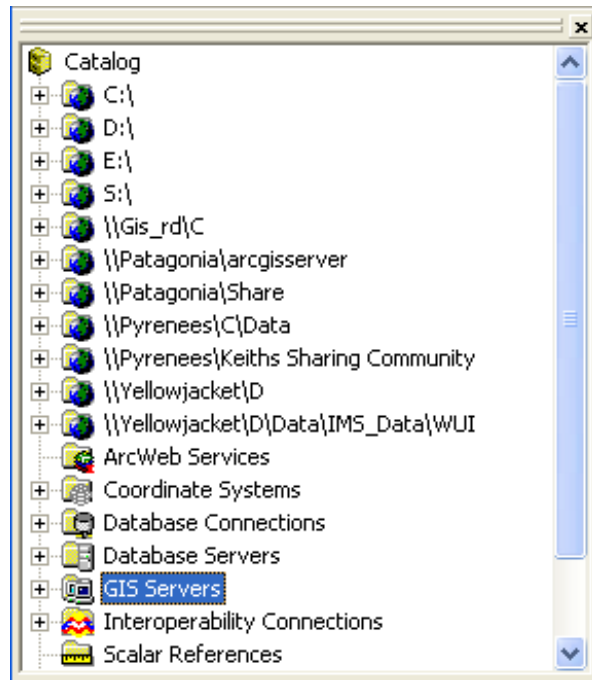
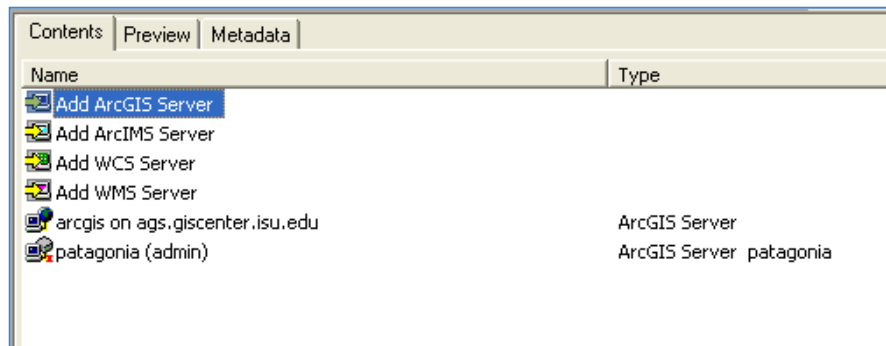


Connecting to ArcGIS Server Services

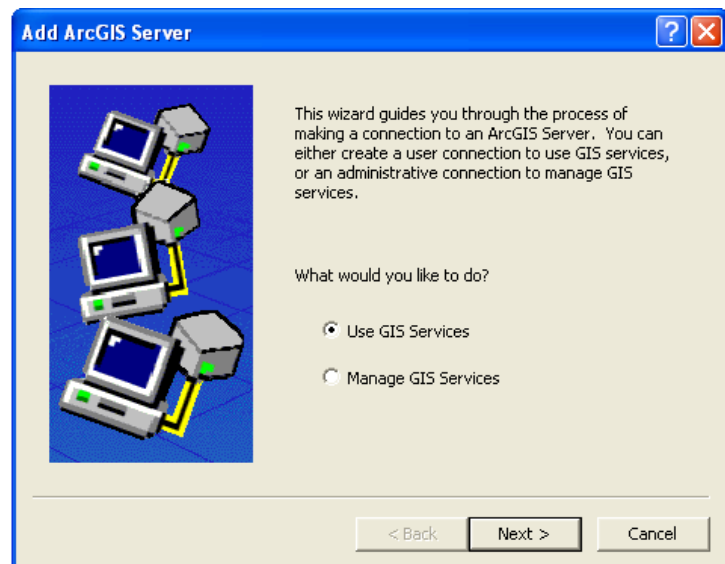
1) Open ArcCatalog



2) Find **GIS Servers** in the Table of Contents menu



3) In the CPM (Contents, Preview, Metadata) window, double click on **Add ArcGIS Server**



4) In the **Add ArcGIS Server** wizard, chose to **Use GIS Services**

5) Click **Next**

- 6) In the next step of the wizard, enter **http://ags.giscenter.isu.edu/arcgis/services** to connect to the ArcGIS Server.
- 7) Click **Finish**

The image shows a 'General' dialog box with a blue title bar. The main area is light beige and contains the following elements:

- Text: 'Choose the type of ArcGIS Server connection'
- Radio button: 'Internet' (selected)
- Text: 'Server URL:' followed by a text box containing 'http://ags.giscenter.isu.edu/arcgis/services'
- Text: 'http://www.myserver.com/arcgis/services' (example URL)
- Radio button: 'Local'
- Text: 'Host Name:' followed by an empty text box
- Section: 'Authentication (Optional)' (enclosed in a rounded rectangle)
- Text: 'User Name:' followed by an empty text box
- Text: 'Password:' followed by an empty text box
- Text: 'Save Username/Password' with a checked checkbox
- Buttons: '< Back', 'Finish', and 'Cancel' at the bottom.

- 8) You should now be able to see services and image services available on the ArcGIS Server.